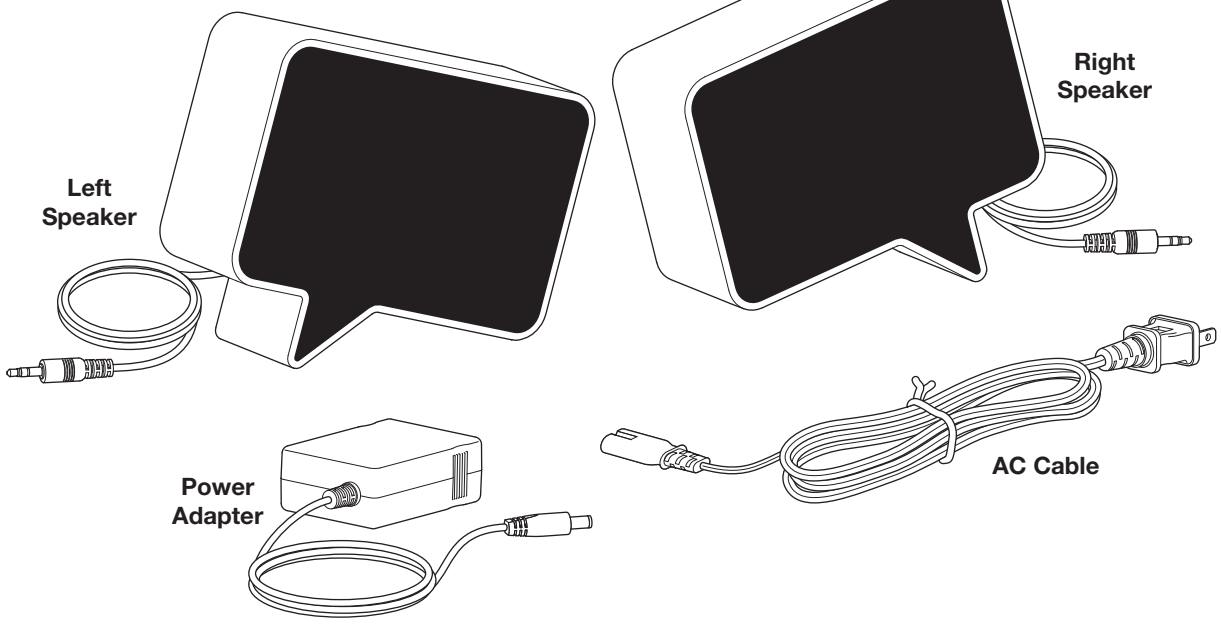


the.

Speak-er



Introduction

Thank you for choosing the. 's Speak-er multimedia speaker system. With an iconic shape that makes a bold statement, these speakers also boast superb sound quality through a combination of sophisticated electronics and a precisely tuned bass reflex design. And despite their small size, each speaker has enough power to fill a room with clear robust sound.

Set up is fast and easy, but before you get started, please review all of the instructions. If you have questions or issues that we can help you with, don't hesitate to email us at speaker@thinkofthe.com.

Safety Instructions

- Please read, follow, and keep these instructions.
- The product must be used indoors. It is neither designed nor tested for outdoor use.
- Do not use near water.
- Do not place near anything that produces heat.
- Do not expose to temperature or humidity extremes, direct sunlight, excessive dust, or vibrations.
- Do not place close to fluorescent or neon light sources.
- Do not drop, apply excessive force to the controls, or put heavy objects on top.
- Place on a stable, level surface. When a cart is used, use caution when moving the cart to avoid injury from tip-over.
- Avoid microphone feedback, continuous output from electronic musical instruments, or distorted output from any signal source.
- Clean with a dry cloth.
- Keep magnetic storage media (disks and tapes) at least four inches away in order to avoid data loss.
- Use only the provided power adapter or one provided from the..
- Disconnecting the power adapter plug is the only way to completely remove power to the product. Therefore, the plug should be readily accessible at all times.
- Unplug the power adapter during lightning storms or when unused for long periods of time.
- Do not defeat the safety purpose of the polarized or grounding-type plug. A polarized plug has two blades with one side wider than the other. A grounding-type plug has two blades and a third grounding prong. The wide blade or the third prong are provided for your safety. If the provided plug does not fit into your outlet, consult an electrician for the replacement of the obsolete outlet.
- Protect cables from being walked on or pinched, particularly at plugs and the point where they exit from the speakers.
- To reduce the risk of electrocution, do not attempt to open the speakers or power adapter. There are no user serviceable parts inside. Refer all servicing to qualified service personnel. Servicing is required when this product has been damaged in any way.
- ♻️ This product should not be treated as ordinary household waste. Instead, it should be handed over to the applicable collection point for the recycling of electrical and electronic equipment. By ensuring this product is disposed of correctly, you will help prevent potential negative consequences for the environment and human health, which could otherwise be caused by inappropriate waste handling of this product. The recycling of materials will help to conserve natural resources. For more detailed information about the recycling of this product, please contact your local city office or your household waste disposal service or visit <http://www.eiae.org>.

Box Contents

Please make sure all the parts shown above are included in your box.

Your Speak-er set was carefully tested and inspected for quality before packing and shipping. After unpacking, should you find any damaged or missing items, please let us know right away by writing to speaker@thinkofthe.com. We recommend that you keep the original carton and packing material for possible future use.

Technical Specifications

Drivers	2" full range
Power	6 W per speaker
Dimensions	H 4 x W 6 x L 2"
Weight	1 lb. per speaker
Input Impedance	>12k Ohm
Signal to Noise Ratio	>90 dB
Frequency Response	70-15k Hz ± 4 dB
Input Sensitivity	350 mV
Max Power Consumption	15 Watts
Audio Technology by Miles Design LC	

Care & Maintenance

Wipe the speakers clean using a soft, dry cloth. Do not use solvents, chemicals, or sprays. Lightly vacuum the grilles as needed. Do not allow liquids to spill or objects to drop into any openings.

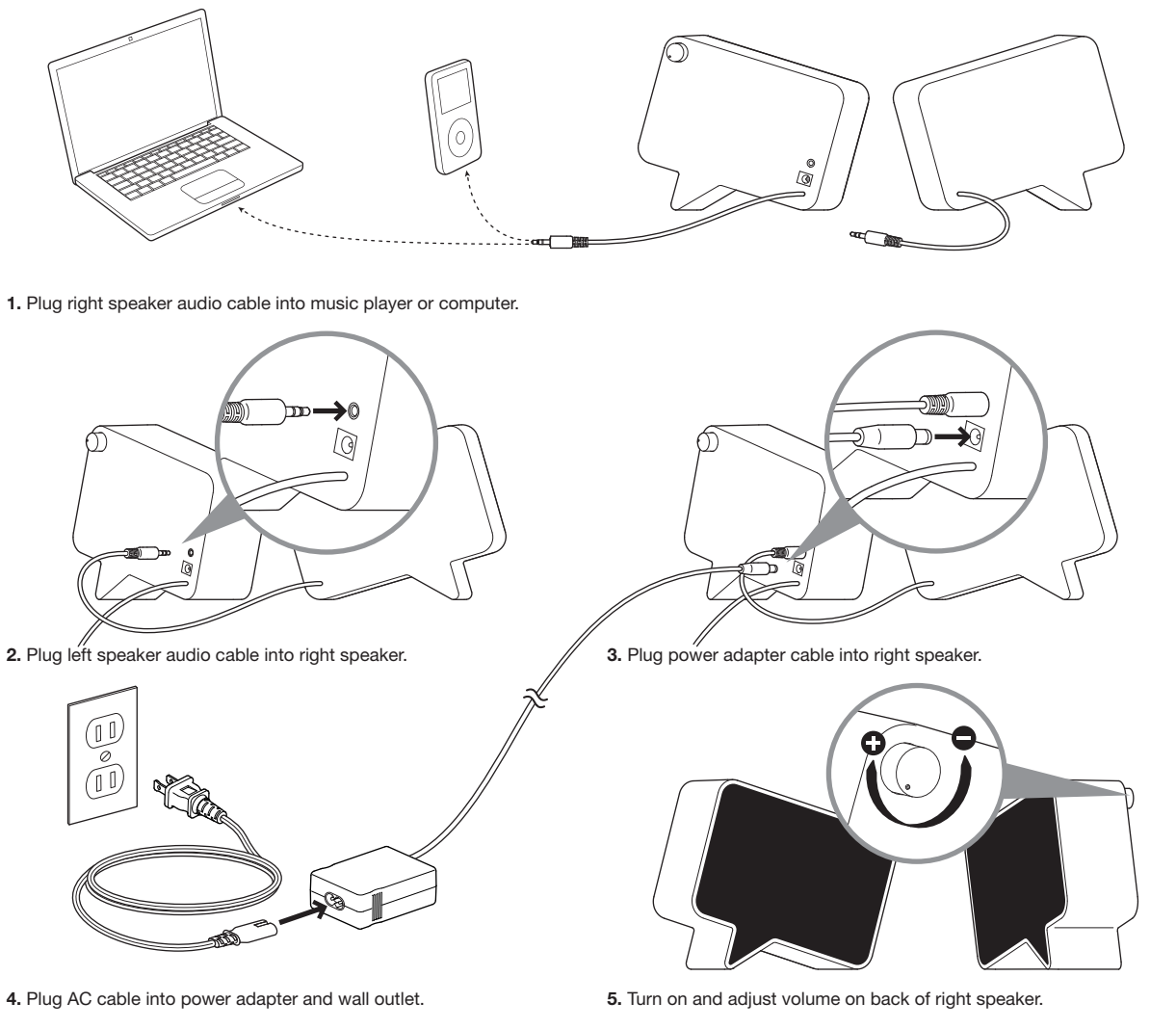
FCC Information

This equipment has been tested and found to comply with the limits for a Class B digital device, pursuant to Part 15 of the FCC Rules. These limits are designed to provide reasonable protection against harmful interference in a residential installation. This equipment generates, uses and can radiate radio frequency energy and, if not installed and used in accordance with the instructions, may cause harmful interference to radio communications. However, there is no guarantee that interference will not occur in a particular installation. If this equipment does cause harmful interference to radio or television reception, which can be determined by turning the equipment off and on, the user is encouraged to try to correct the interference by one or more of the following measures:

- Reorient or relocate the receiving antenna.
- Increase the separation between the equipment and receiver.
- Connect the equipment into an outlet on a circuit different from that to which the receiver is connected.
- Consult the dealer or an experienced radio/television technician for help.

Modifications not expressly approved by the manufacturer could void the user authority to operate the equipment under FCC rules.

Set Up Instructions



Troubleshooting

- Problem: No sound**
- Make sure the speakers are turned on by checking the volume knob on the back of the right speaker.
 - Make sure the speaker volume is not set to the minimum.
 - Make sure that the music player is plugged in and playing at an audible volume.
 - Make sure all connections are secure.
 - Check your speaker wires for damage or frays, which can cause an open or short circuit.
 - When using a surge protector or power strip, be sure it is turned on.
- Problem: No sound from one speaker**
- Make sure the left speaker audio cable is securely plugged into the right speaker.
 - Make sure the computer provides stereo sound. If it has one channel only, connect a mono-to-stereo adapter (not supplied) to send the sound to both speakers.
- Problem: Sound is distorted or clips**
- Speaker volume may be too high; decrease the volume.
 - When using any wireless speakers (computer or cellular) in proximity, move the speakers farther from that source.
- Problem: Speakers make occasional buzzing noises**
- Make sure speakers are placed away from the speakers.
- Problem: Background noise when no source is playing**
- Decrease the volume level on your speakers and increase the level on the music player to your preferred volume.

Warranty Information

- What does the warranty cover?**
The. warrants that this product shall be free from defects in materials or workmanship with the exceptions stated below.
- What is the period of coverage?**
This warranty runs for six (6) months from the date of purchase. Your warranty is automatic, so there is no need to register. This limited warranty applies only to these speakers purchased in the United States. For limited warranty coverage elsewhere, please contact your the. dealer, reseller, or distributor.
- What does the warranty not cover?**
This warranty does not cover damage caused by accident, misuse, abuse, neglect, excessive moisture, lightning, power surges, other acts of nature, unauthorized product modification or repair, or failure to follow the instructions outlined in the instructions manual.
- What will the. do to correct the problem?**
We will repair or replace any defective parts, at our option, within a reasonable amount of time and free of charge any time during the warranty period. You will be responsible for shipping the product back to after at our expense.
- What we ask for you?**
You will be responsible for shipping or transportation charges directly to the. or to an authorized dealer. We recommend that you keep the original shipping materials as it is important that you package the product so that it will not be damaged during shipping. The. cannot be responsible for any damages incurred during shipping due to poor packing, so please pack well and make sure to insure your shipment.
- How to get warranty service?**
Proof of purchase as evidence the unit was purchased from an authorized dealer within the warranty period is required for warranty service. If you have any questions about your warranty coverage or you think you may need service, email the the. authorized service center at speaker@thinkofthe.com. We will do everything we can to answer your questions and resolve any issues as quickly as possible.
- Exclusive remedy**
This limited warranty is fully transferable provided that the current owner furnishes the original proof of purchase. THE MAXIMUM LIABILITY OF THE. SHALL NOT EXCEED THE ACTUAL PURCHASE PRICE PAID BY YOU FOR THE PRODUCT. IN NO EVENT SHALL THE. BE LIABLE FOR SPECIAL, INCIDENTAL, CONSEQUENTIAL, OR INDIRECT DAMAGES.

Contact Information

For further information or additional help in solving problems related to your Speak-er speakers, contact us at speaker@thinkofthe.com.